



LÍNEA TÉCNICA
TECHNICAL RANGE

PISCINAS SWIMMING POOLS



Bases antideslizantes Ranurados Celdillas



PORCELÁNICO PORCELAIN



ESMALTADO GLAZED



<1% máx 2 mm.



E≤0,5%



5,8x10⁻⁶xC⁻¹



>43 N/mm²



6 a 8



clase 5 class 5



clase 3 class 3



C



Liso: R10 Ranurado: R11 Celdillas: R12



si/yes



0,80



✓



✓



✓

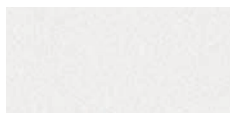


✓

Bases antideslizantes Anti slip tiles

Base 12x25 Tile 12x25

8,5 mm



Cod. 903124 · [MC405]

Blanco mate
Matt white



Cod. 903100 · [MC405]

Azul mate
Matt blue



Cod. 903125 · [MC430]

Azul oscuro mate
Matt dark blue



Cod. 903739 · [MC405]

Azul pálido mate
Matt pale blue



Cod. 900603 · [MC405]

Natural
Natural



Cod. 903310 · [MC505]

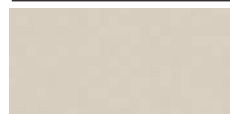
Aciker gris mate
Aciker matt grey



Cod. 902193 · [MC430]

Negro mate
Matt black

Base 12x25 Tile 12x25 14 mm.



Cod. 901863 · [MC565]

Natural
Natural



Cod. 901865 · [MC645]

Aciker gris mate
Aciker matt grey

Ranurados Grooved tiles

Base 12x25 Tile 12x25

8,5 mm



Cod. 903123 · [MC550]

Blanco mate
Matt white



Cod. 903121 · [MC550]

Azul mate
Matt blue



Cod. 903122 · [MC565]

Azul oscuro mate
Matt dark blue



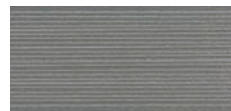
Cod. 903792 · [MC550]

Azul pálido mate
Matt pale blue



Cod. 900694 · [MC550]

Natural
Natural



Cod. 903721 · [MC565]

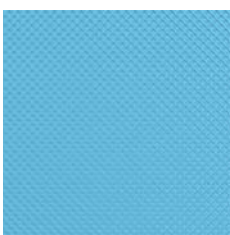
Aciker gris mate
Aciker matt grey



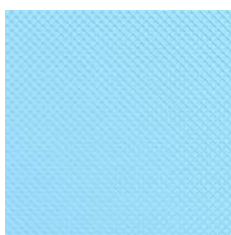
Cod. 903789 · [MC565]

Negro mate
Matt black

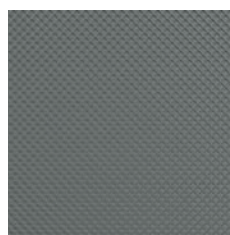
Celdillas Cell textures



Celdillas 25x25 Cells 25x25

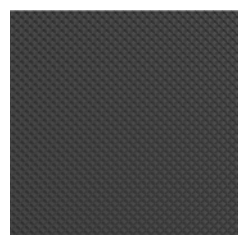


8,5 mm



Cod. 903131 · [MC540]

Azul mate Matt blue

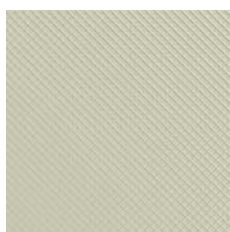


Cod. 903791 · [MC540]

Azul pálido mate Matt pale blue

Celdillas 12x25 Cells 25x25

8,5 mm



Cod. 903313 · [MC540]

Aciker gris mate Aciker matt grey

Cod. 903788 · [MC540]

Negro mate Matt black

Celdillas 25x25 Cells 25x25

8,5 mm

14 mm

Natural Natural

Cod. 900610 · [MC490]

Cod. 901862 · [MC600]

Celdillas 12x25 Cells 25x25

8,5 mm

14 mm

Natural Natural

Cod. 900684 · [MC490]

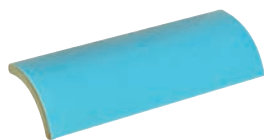
Cod. 901866 · [MC600]

Piezas especiales Special pieces



Media caña interior
Internal radial tile

Cod. 900683 · [PZ075]
Cod. 903116 · [PZ075]
Cod. 903114 · [PZ075]
Cod. 902632 · [PZ085]
Cod. 903755 · [PZ085]
Cod. 903756 · [PZ085]



Media caña exterior
External radial tile

Cod. 900699 · [PZ075]
Cod. 903117 · [PZ075]
Cod. 903115 · [PZ075]
Cod. 903757 · [PZ085]
Cod. 903758 · [PZ085]
Cod. 903759 · [PZ085]



Escocia interior
Round internal mitre

Cod. 900690 · [PZ270]
Cod. 903150 · [PZ270]
Cod. 903149 · [PZ270]
Cod. 901608 · [PZ080]
Cod. 903761 · [PZ080]
Cod. 903762 · [PZ080]



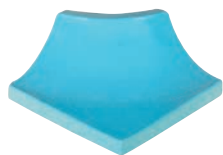
Escocia exterior
Round external mitre

Cod. 900691 · [PZ270]
Cod. 903152 · [PZ270]
Cod. 903151 · [PZ270]
Cod. 903763 · [PZ080]
Cod. 903764 · [PZ080]
Cod. 903765 · [PZ080]



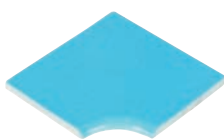
Esq. media caña interior
Internal mitre

Cod. 900698 · [PZ320]
Cod. 903146 · [PZ320]
Cod. 903145 · [PZ320]
Cod. 901607 · [PZ335]
Cod. 903767 · [PZ335]
Cod. 903768 · [PZ335]



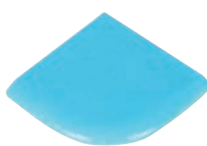
Esq. media caña exterior
External mitre

Cod. 900697 · [PZ320]
Cod. 903148 · [PZ320]
Cod. 903147 · [PZ320]
Cod. 903769 · [PZ335]
Cod. 903770 · [PZ335]
Cod. 903771 · [PZ335]



Esq. int. canto romo
Bullnose int. corner

Cod. 900693 · [PZ330]
Cod. 903154 · [PZ330]
Cod. 903153 · [PZ330]
Cod. 901712 · [PZ350]
Cod. 903773 · [PZ350]
Cod. 903774 · [PZ350]
Cod. 903155 · [PZ330]



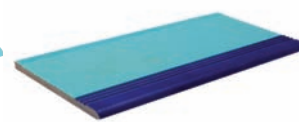
Esq. ext. canto romo
Bullnose external corner

Cod. 900696 · [PZ330]
Cod. 903157 · [PZ330]
Cod. 903156 · [PZ330]
Cod. 901713 · [PZ350]
Cod. 903776 · [PZ350]
Cod. 903777 · [PZ350]
Cod. 903158 · [PZ330]



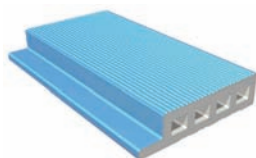
Canto romo
Bullnose

Cod. 900687 · [PZ055]
Cod. 903119 · [PZ055]
Cod. 903113 · [PZ055]
Cod. 901711 · [PZ080]
Cod. 903779 · [PZ080]
Cod. 903780 · [PZ080]
Cod. 903118 · [PZ055]



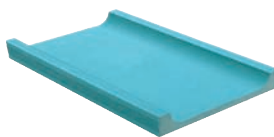
Canto romo ranurado
Grooved bullnose

Cod. 903269 · [PZ080]



Apoyo rejilla macizo Compact grid support

Cod. 901813 · [PZ205]
Cod. 901585 · [PZ205]
Cod. 901748 · [PZ205]



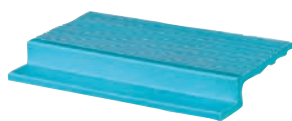
Canal Channel

Cod. 903176 · [PZ125]



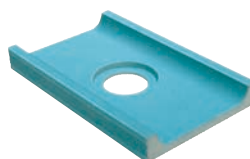
Canaleta Overflow channel

Cod. 900659 · [PZ125]



Apoyo rejilla Grid support

Cod. 902988 · [PZ205]
Cod. 902989 · [PZ205]
Cod. 902990 · [PZ205]
Cod. 902991 · [PZ205]



Canal con desagüe Duct

Cod. 903177 · [PZ150]



Canaleta con desagüe Drainage overflow channel

Cod. 900660 · [PZ150]

Piezas señalización Marking tiles

Numeración de calles Lane marking tiles



Cod. 903181 · [JG310]



Cod. 903182 · [JG310]

Señalización de profundidad Depth marking tiles



Cod. 903183 · [JG310]



Cod. 903184 · [JG310]

PISCINAS SWIMMING POOLS

Revestimientos coatings

Base 12x25 Tile 12x25

8,5 mm

Revestimientos



REVESTIMIENTO
WALL TILING



PORCELÁNICO
PORCELAIN



ESMALTADO
GLAZED



<1% ·
máx 2 mm.



E≤0,5%



5,8x10⁻⁶xC⁻¹



>43 N/mm²



4



clase 5
class 5



clase 0
class 0



A



<R9



si/yes



✓



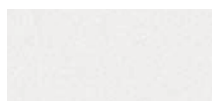
✓



✓



✓



Cod. 900600 · [MC410]
Blanco brillo
Glossy white



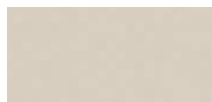
Cod. 900601 · [MC410]
Azul brillo
Glossy blue



Cod. 900602 · [MC435]
Azul oscuro brillo
Glossy dark blue



Cod. 903332 · [MC410]
Azul pálido brillo
Glossy pale blue



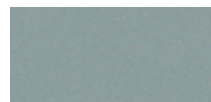
Cod. 901717 · [MC405]
Aciker Natural brillo
Glossy Natural Aciker



Cod. 903737 · [MC435]
Aciker gris brillo
Glossy aciker Grey



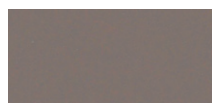
Cod. 901716 · [MC435]
Negro brillo
Glossy black



Cod. 903331 · [MC620]
Acero brillo
Glossy steel



Cod. 903336 · [MC620]
Marengo brillo
Glossy charcoal



Cod. 903337 · [MC620]
Visión brillo
Glossy mink

Piezas especiales Special pieces



Media caña interior
Internal radial tile

■	Cod. 900617 · [PZ075]
■	Cod. 900618 · [PZ075]
■	Cod. 903285 · [PZ085]
■	Cod. 903833 · [PZ075]
■	Cod. 903740 · [PZ085]
■	Cod. 903741 · [PZ085]
■	Cod. 903488 · [PZ085]
■	Cod. 903460 · [PZ085]
■	Cod. 903467 · [PZ085]
■	Cod. 903474 · [PZ085]



Media caña exterior
External radial tile

■	Cod. 900621 · [PZ075]
■	Cod. 900622 · [PZ075]
■	Cod. 903286 · [PZ085]
■	Cod. 903834 · [PZ075]
■	Cod. 903742 · [PZ085]
■	Cod. 903743 · [PZ085]
■	Cod. 903485 · [PZ085]
■	Cod. 903457 · [PZ085]
■	Cod. 903464 · [PZ085]
■	Cod. 903471 · [PZ085]



Escocia interior
Round internal mitre

■	Cod. 900619 · [PZ270]
■	Cod. 900620 · [PZ270]
■	Cod. 903288 · [PZ270]
■	Cod. 903835 · [PZ270]
■	Cod. 903744 · [PZ270]
■	Cod. 903745 · [PZ270]
■	Cod. 903489 · [PZ270]
■	Cod. 903461 · [PZ270]
■	Cod. 903468 · [PZ270]
■	Cod. 903475 · [PZ270]



Escocia exterior
Round external mitre

■	Cod. 900623 · [PZ270]
■	Cod. 900624 · [PZ270]
■	Cod. 903289 · [PZ270]
■	Cod. 903836 · [PZ270]
■	Cod. 903746 · [PZ270]
■	Cod. 903747 · [PZ270]
■	Cod. 903486 · [PZ270]
■	Cod. 903458 · [PZ270]
■	Cod. 903465 · [PZ270]
■	Cod. 903472 · [PZ270]



Esq. media caña interior
Internal mitre

■	Cod. 900640 · [PZ320]
■	Cod. 900641 · [PZ320]
■	Cod. 903287 · [PZ345]
■	Cod. 903837 · [PZ320]
■	Cod. 903748 · [PZ345]
■	Cod. 903749 · [PZ345]
■	Cod. 903487 · [PZ345]
■	Cod. 903459 · [PZ345]
■	Cod. 903466 · [PZ345]
■	Cod. 903473 · [PZ345]



Esq. media caña exterior
External mitre

■	Cod. 900642 · [PZ320]
■	Cod. 900643 · [PZ320]
■	Cod. 903081 · [PZ345]
■	Cod. 903838 · [PZ320]
■	Cod. 903750 · [PZ345]
■	Cod. 903751 · [PZ345]
■	Cod. 903490 · [PZ345]
■	Cod. 903462 · [PZ345]
■	Cod. 903469 · [PZ345]
■	Cod. 903476 · [PZ345]



Canto romo
Bullnose

■	Cod. 901267 · [PZ055]
■	Cod. 901266 · [PZ055]
■	Cod. 900627 · [PZ065]
■	Cod. 903839 · [PZ055]
■	Cod. 903752 · [PZ065]
■	Cod. 903753 · [PZ065]
■	Cod. 903484 · [PZ065]
■	Cod. 903456 · [PZ065]
■	Cod. 903463 · [PZ065]
■	Cod. 903470 · [PZ065]



Mosaicos

REVESTIMIENTO WALL TILING



PORCELÁNICO PORCELAIN



ESMALTADO GLAZED



<1% · máx 2 mm.



E≤0,5%



5,8x10⁻⁶xC⁻¹



>35 N/mm²



clase 5 CLASS 5



Mates(antislip): 3 Brillantes(glossy): 0



Mates(antislip): C Brillantes(glossy): A



Mates(antislip): R10 Brillantes(glossy): <R9



si/yes



✓



✓



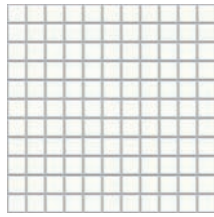
✓

Mosaicos Mosaics

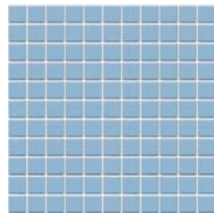
Antideslizantes Anti slip

Mosaico 30x30 Mosaic 30x30

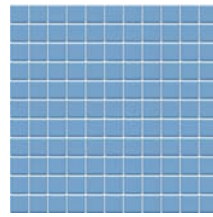
2,5x2,5x0,5



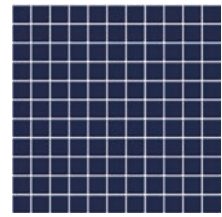
Cod. 901899 · [MC595] **Mosaico Blanco antideslizante** Anti slip white mosaic tile



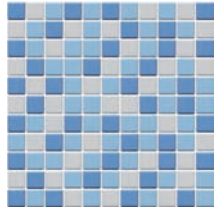
Cod. 902884 · [MC595] **Mosaico Azul pálido antideslizante** Anti slip pale blue mosaic tile



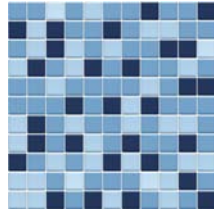
Cod. 901898 · [MC595] **Mosaico Azul antideslizante** Anti slip blue mosaic tile



Cod. 902994 · [MC595] **Mosaico Azul Oscuro antideslizante** Anti slip dark blue mosaic tile



Cod. 902992 · [MC595] **Mosaico Mix antideslizante** Anti slip mix mosaic tile



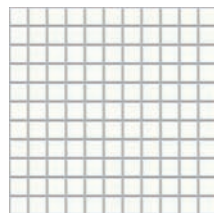
Cod. 902993 · [MC595] **Mosaico Mix oscuro antideslizante** Anti slip mix dark mosaic tile

Mosaicos Mosaics

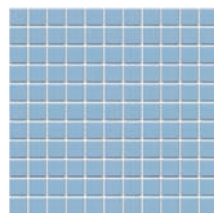
Brillo Glossy

Mosaico 30x30 Mosaic 30x30

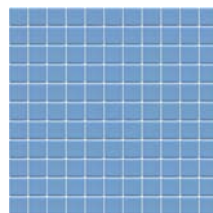
2,5x2,5x0,5



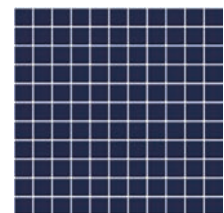
Cod. 902174 · [MC595] **Mosaico Blanco brillo** Glossy white mosaic tile



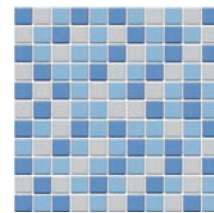
Cod. 902453 · [MC595] **Mosaico Azul pálido brillo** Glossy pale blue mosaic tile



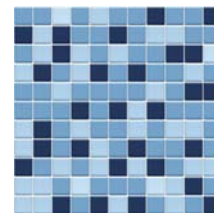
Cod. 901897 · [MC595] **Mosaico Azul brillo** Glossy blue mosaic tile



Cod. 902454 · [MC595] **Mosaico Azul Oscuro brillo** Glossy dark blue mosaic tile



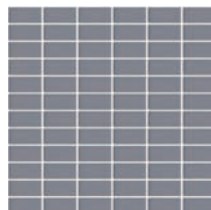
Cod. 903723 · [MC595] **Mosaico Mix brillo** Glossy mix mosaic tile



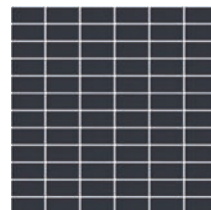
Cod. 903722 · [MC595] **Mosaico Mix oscuro brillo** Glossy mix dark mosaic tile

Mosaico 30x30 Mosaic 30x30

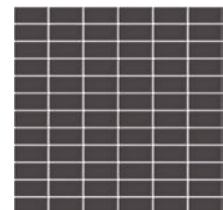
2,5x5x0,5



Cod. 902455 · [MC655] **Mosaico Acero brillo** Glossy steel mosaic tile



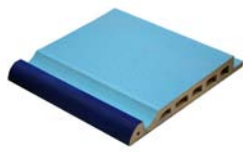
Cod. 902456 · [MC655] **Mosaico Marengo brillo** Glossy charcoal mosaic tile



Cod. 902457 · [MC655] **Mosaico Visón brillo** Glossy mink mosaic tile

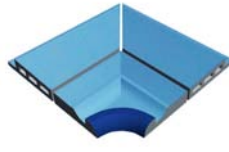
SISTEMAS DE CORONACIÓN DESBORDANTES OVERFLOW EDGING SYSTEMS

Sistema GA-SPA-U GA-SPA-U system



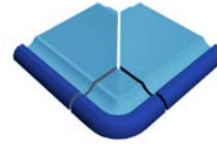
Borde GA SPA
GA SPA edge

- Cod. 903799 · [PZ370]
- Cod. 901817 · [PZ370]
- Cod. 901823 · [PZ370]
- Cod. 902158 · [PZ370]



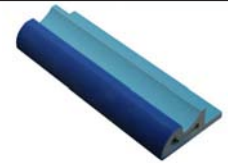
Esq. int. borde GA SPA
GA SPA edge int. corner

- Cod. 903846 · [JG710]
- Cod. 901818 · [JG710]
- Cod. 901824 · [JG710]
- Cod. 902195 · [JG710]



Esq. ext. borde GA SPA
GA SPA edge ext. corner

- Cod. 903847 · [JG710]
- Cod. 901819 · [JG710]
- Cod. 901825 · [JG710]
- Cod. 902160 · [JG710]



Nicho GA SPA
GA SPA niche

- Cod. 903848 · [PZ295]
- Cod. 901820 · [PZ295]
- Cod. 901826 · [PZ295]
- Cod. 902161 · [PZ295]



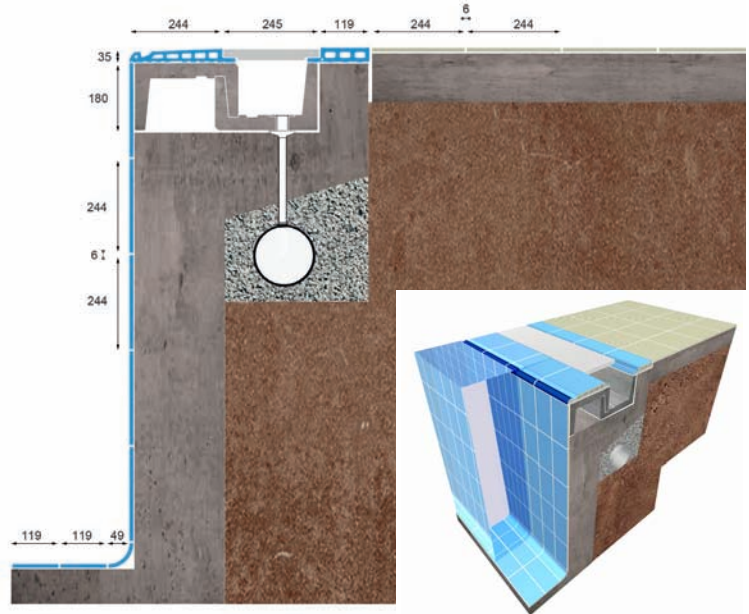
Esq. izda. nicho GA SPA
GA SPA niche left corner

- Cod. 903849 · [PZ445]
- Cod. 901821 · [PZ445]
- Cod. 901827 · [PZ445]
- Cod. 902163 · [PZ445]

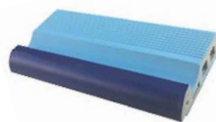


Esq. dcha. nicho GA SPA
GA SPA niche right corner

- Cod. 903850 · [PZ445]
- Cod. 901822 · [PZ445]
- Cod. 901828 · [PZ445]
- Cod. 902162 · [PZ445]

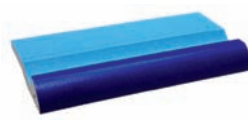


Sistema Finlandés Finnish system



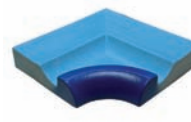
Borde finlandés macizo
Solid finnish edge

- Cod. 903800 · [PZ265]
- Cod. 901584 · [PZ265]
- Cod. 902000 · [PZ265]
- Cod. 901832 · [PZ265]



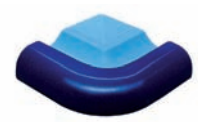
Borde finlandés
Finnish edge

- Cod. 900675 · [PZ220]
- Cod. 903101 · [PZ220]
- Cod. 903102 · [PZ235]
- Cod. 903103 · [PZ235]
- Cod. 903104 · [PZ235]



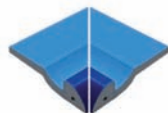
Esq. interior borde finlandés
Finnish edge internal corner

- Cod. 900679 · [PZ385]
- Cod. 903105 · [PZ385]
- Cod. 903844 · [PZ385]
- Cod. 903107 · [PZ385]
- Cod. 903109 · [PZ385]
- Cod. 903111 · [PZ385]



Esq. exterior borde finlandés
Finnish edge external corner

- Cod. 900681 · [PZ385]
- Cod. 903106 · [PZ385]
- Cod. 903845 · [PZ385]
- Cod. 903108 · [PZ385]
- Cod. 903110 · [PZ385]
- Cod. 903112 · [PZ385]



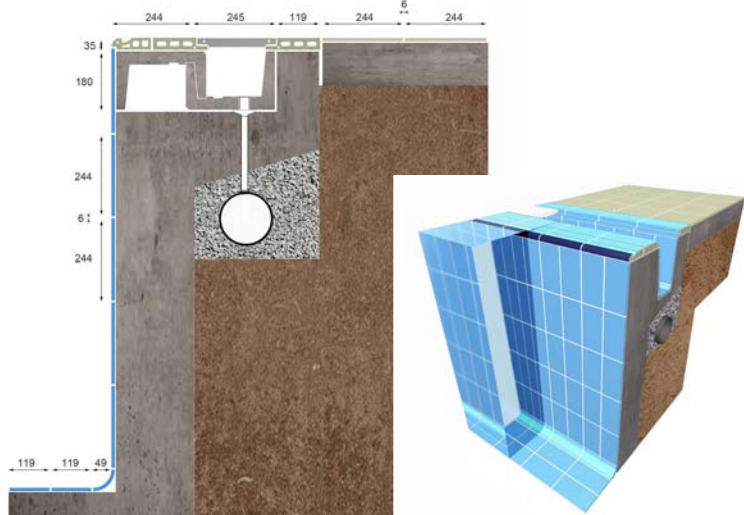
Esq. interior inglete finlandés
Finnish miter joint internal corner

- Cod. 901223 · [JG350]
- Cod. 903120 · [JG350]
- Cod. 903138 · [JG350]
- Cod. 903139 · [JG350]
- Cod. 903140 · [JG350]



Esq. exterior inglete finlandés
Finnish miter joint external corner

- Cod. 901228 · [JG350]
- Cod. 903141 · [JG350]
- Cod. 903142 · [JG350]
- Cod. 903143 · [JG350]
- Cod. 903144 · [JG350]



NATURAL



PORCELÁNICO
PORCELAIN



ESMALTADO
GLAZED



<1% ·
máx 2 mm.



E≤0,5%



5,8x10⁻⁶xC⁻¹



>28 N/mm²



6 a 8



clase 5
CLASS 5



clase 3
CLASS 3



C



R11



si/yes



✓



✓



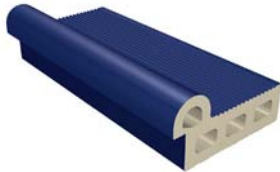
✓



✓

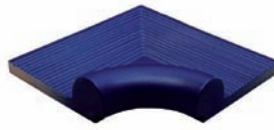
SISTEMAS DE CORONACIÓN DESBORDANTES OVERFLOW EDGING SYSTEMS

Sistema Zurich zurich system



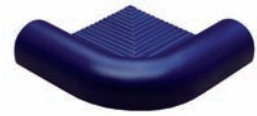
Borde zurich macizo
Solid zurich edge

- Cod. 901903 · [PZ235]
- Cod. 901901 · [PZ235]
- Cod. 901902 · [PZ235]



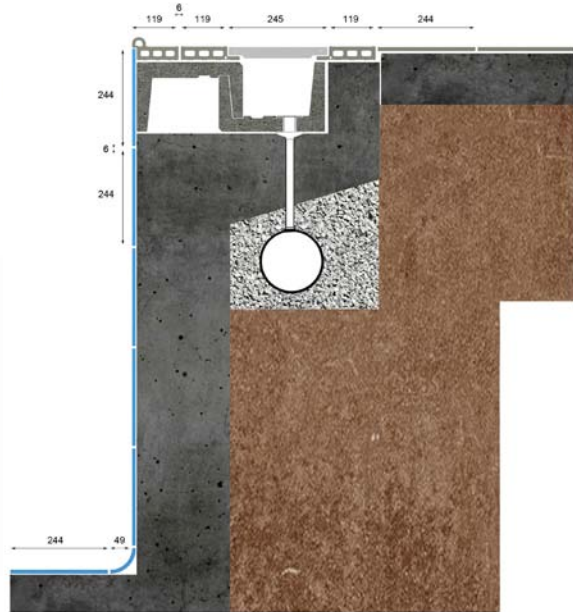
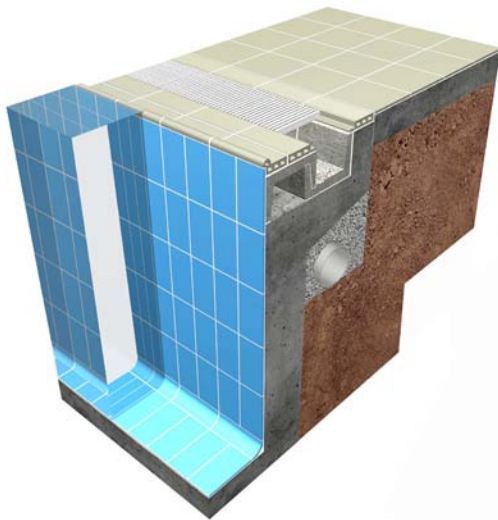
Esq. interior borde zurich
Zurich edge internal corner

- Cod. 900677 · [PZ380]
- Cod. 903134 · [PZ380]
- Cod. 903135 · [PZ380]



Esq. exterior borde zurich
Zurich edge external corner

- Cod. 900678 · [PZ380]
- Cod. 903136 · [PZ380]
- Cod. 903137 · [PZ380]



Piezas de hormigón Concrete pieces



Pieza estándar
Standard piece
Cod. 901754 · [PZ135]



Pieza maciza esquina de nicho/anclaje corchera
Niche corner piece/lane rope fixing piece
Cod. 901751 · [PZ255]



Pieza nicho
Niche piece
Cod. 901752 · [PZ135]



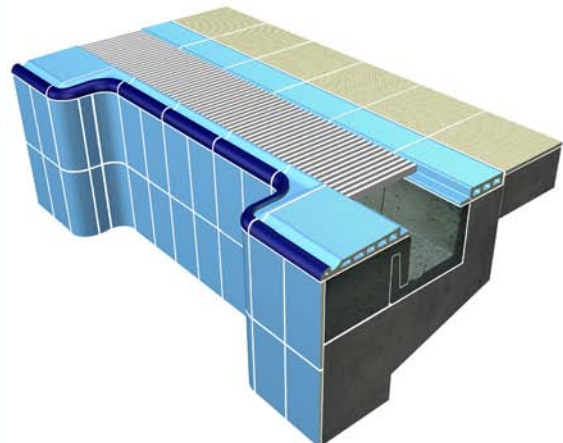
Pieza roma para mosaico
Blunt piece for mosaic
Cod. 901753 · [PZ135]



Pieza esquina interior
Internal corner piece
Cod. 901750 · [J6745]



Pieza esquina exterior
External corner piece
Cod. 901749 · [J6745]



Colores / Colors



Natural
Natural



Azul mate
Matt blue



Azul oscuro mate
Matt dark blue



Blanco mate/gris mate
Matt white/matt grey



Azul mate/azul oscuro mate
Matt blue/matt dark blue



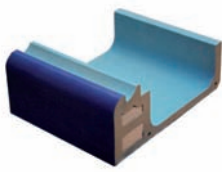
Blanco mate/azul oscuro mate
Matt white/matt dark blue



Natural/azul oscuro mate
Natural/matt dark blue

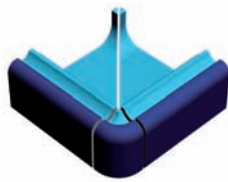
SISTEMAS DE CORONACIÓN DESBORDANTES OVERFLOW EDGING SYSTEMS

Sistema GA-1 GA-1 system



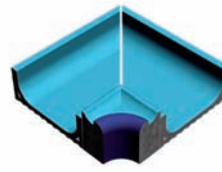
Sistema GA-1
GA-1 system

- Cod. 903400 · [PZ620]
- Cod. 903407 · [PZ620]
- Cod. 903414 · [PZ620]



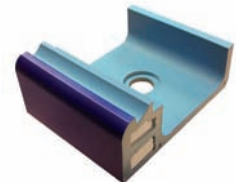
Esq. ext. sistema GA-1
GA-1 system ext. corner

- Cod. 903402 · [JG763]
- Cod. 903409 · [JG763]
- Cod. 903416 · [JG763]



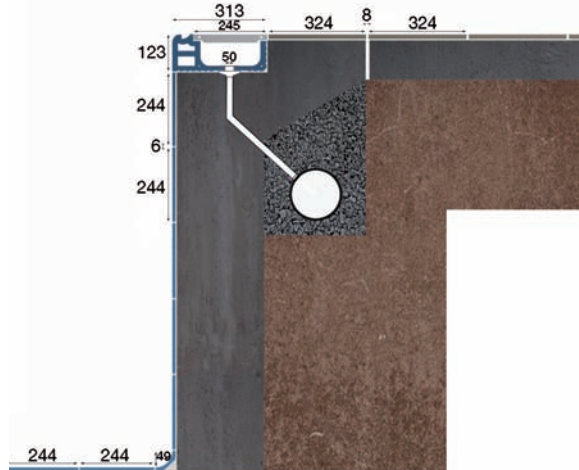
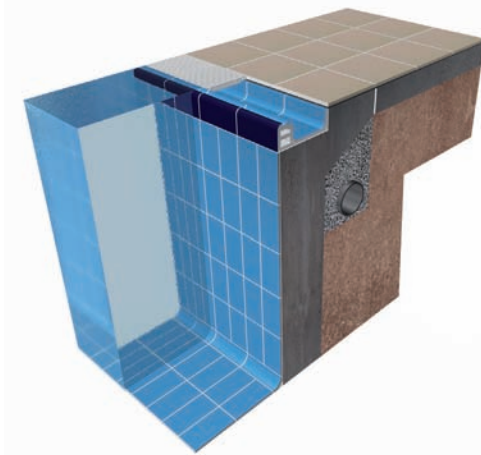
Esq. int. sistema GA-1
GA-1 system int. corner

- Cod. 903401 · [JG763]
- Cod. 903408 · [JG763]
- Cod. 903415 · [JG763]



Sistema GA-1 con desagüe
GA-1 drainage system

- Cod. 903539 · [PZ715]
- Cod. 903540 · [PZ715]
- Cod. 903541 · [PZ715]

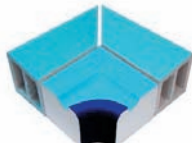


Sistema GA-2 GA-2 system



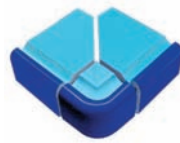
Borde GA-2
GA-2 edge

- Cod. 903126 · [PZ515]
- Cod. 903279 · [PZ515]
- Cod. 903527 · [PZ515]



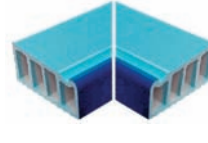
Esq. int. borde GA-2
GA-2 edge internal corner

- Cod. 903162 · [JG765]
- Cod. 903280 · [JG765]
- Cod. 903528 · [JG765]



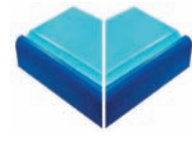
Esq. ext. borde GA-2
GA-2 edge external corner

- Cod. 903163 · [JG765]
- Cod. 903281 · [JG765]
- Cod. 903529 · [JG765]



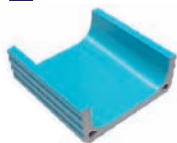
Esquina interior inglete borde GA-2
GA-2 edge miter joint internal corner

- Cod. 903164 · [JG755]
- Cod. 903531 · [JG755]
- Cod. 903533 · [JG755]



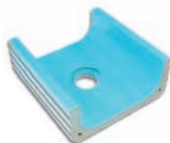
Esquina exterior inglete borde GA-2
GA-2 edge miter joint external corner

- Cod. 903165 · [JG755]
- Cod. 903532 · [JG755]
- Cod. 903534 · [JG755]



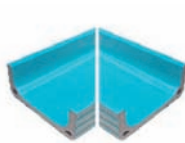
Canal GA-2
GA-2 channel

- Cod. 903127 · [PZ315]
- Cod. 903282 · [PZ315]
- Cod. 903276 · [PZ315]



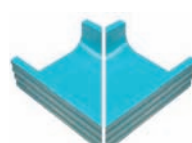
Canal desagüe GA-2
GA-2 duct

- Cod. 903166 · [PZ330]
- Cod. 903290 · [PZ330]
- Cod. 903277 · [PZ330]



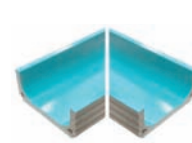
Esq. int. canal GA-2
GA-2 channel internal corner

- Cod. 903167 · [JG660]
- Cod. 903283 · [JG660]
- Cod. 903278 · [JG660]



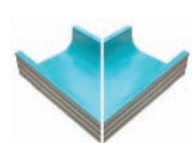
Esq. ext. canal GA-2
GA-2 channel external corner

- Cod. 903168 · [JG660]
- Cod. 903284 · [JG660]
- Cod. 903530 · [JG660]



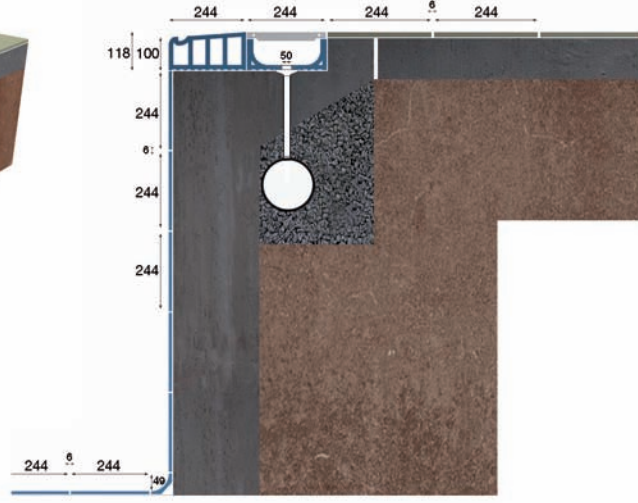
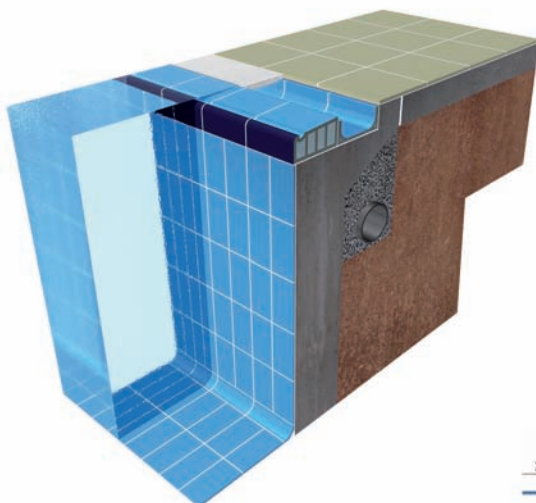
Esquina interior inglete canal GA-2
GA-2 channel miter joint internal corner

- Cod. 903169 · [JG680]
- Cod. 903535 · [JG680]
- Cod. 903537 · [JG680]



Esquina exterior inglete canal GA-2
GA-2 channel miter joint external corner

- Cod. 903170 · [JG680]
- Cod. 903536 · [JG680]
- Cod. 903538 · [JG680]



SISTEMAS DE CORONACIÓN DESBORDANTES OVERFLOW EDGING SYSTEMS

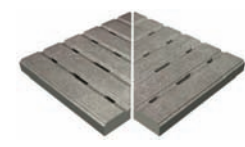
Sistema B-33 B-33 System

- Duero Forest**
- P** PORCELÁNICO PORCELAIN
- ESMALTADO** GLAZED
- <1% -1,25%** máx 2 mm.
- E=0,5%**
- 5,8x10⁻⁶xC⁻¹**
- Duero >40 N/mm² Forest >35 N/mm²**
- Urbión PEI 5 Aranda/Forest PEI 4**
- H6**
- 6 a 8**
- clase 5** class 5
- clase 3** class 3
- C**
- R10**
- si/yes**
- EXTRUSION** ✓
- ✓
- ✓
- ✓

DUERO Porcelánicos Porcelain Tiles

Aranda Urbión

			
Borde desbordante Overflowing edge	Esq. int. borde desbordante Overflowing internal edge	Esq. ext. borde desbordante Overflowing external edge	Rejilla cerámica monocompact Monocompact ceramic grid
Cod. 902123 · [PZ650] Cod. 902122 · [PZ650]	Cod. 902136 · [JG760] Cod. 902134 · [JG760]	Cod. 902137 · [JG760] Cod. 902135 · [JG760]	Cod. 902978 · [PZ595] Cod. 902979 · [PZ595]



Esquina rejilla Corner grid

Cod. 901471 · [JG740]
Cod. 901472 · [JG740]



Canaleta* Overflow chanel

Cod. 902131 · [PZ340]
Cod. 902130 · [PZ340]

* Disponible Canaleta con desagüe
* Available Overflow channel with drainage



FOREST Porcelánicos Porcelain Tiles

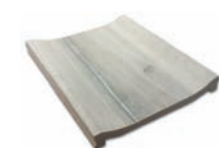
Beige Grafito Gris Marrón Nogal

			
Borde desbordante Overflowing edge	Esq. int. borde desbordante Overflowing internal edge	Esq. ext. borde desbordante Overflowing external edge	Rejilla cerámica monocompact Monocompact ceramic grid
Cod. 901764 · [PZ650] Cod. 901765 · [PZ650] Cod. 901766 · [PZ650] Cod. 901767 · [PZ650] Cod. 901855 · [PZ650]	Cod. 901906 · [JG760] Cod. 901911 · [JG760] Cod. 901916 · [JG760] Cod. 901921 · [JG760] Cod. 901926 · [JG760]	Cod. 901907 · [JG760] Cod. 901912 · [JG760] Cod. 901917 · [JG760] Cod. 901922 · [JG760] Cod. 901927 · [JG760]	Cod. 902983 · [PZ595] Cod. 902985 · [PZ595] Cod. 902984 · [PZ595] Cod. 902986 · [PZ595] Cod. 902987 · [PZ595]



Esquina rejilla Corner grid

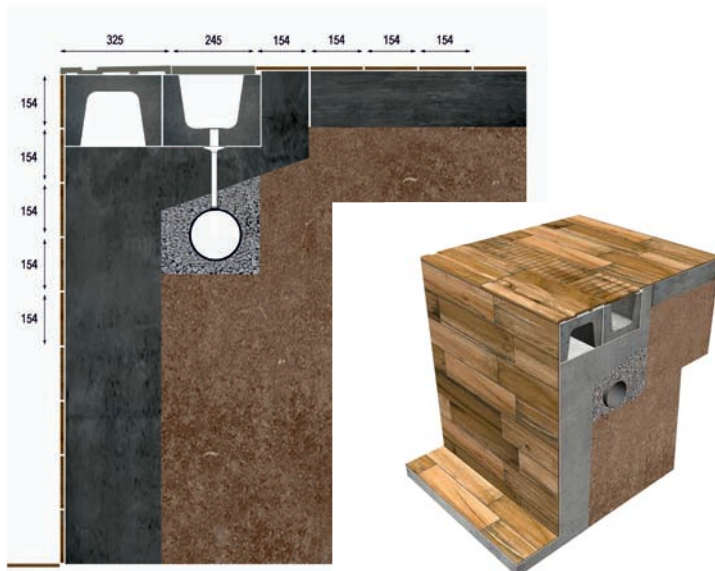
Cod. 901470 · [JG740]
Cod. 901498 · [JG740]
Cod. 900157 · [JG740]
Cod. 901469 · [JG740]
Cod. 900158 · [JG740]



Canaleta* Overflow chanel

Cod. 901784 · [PZ340]
Cod. 901785 · [PZ340]
Cod. 901786 · [PZ340]
Cod. 901787 · [PZ340]
Cod. 901860 · [PZ340]

* Disponible Canaleta con desagüe
* Available Overflow channel with drainage



SISTEMAS DE CORONACIÓN DESBORDANTES OVERFLOW EDGING SYSTEMS

Sistema B-33 B-33 System

ROCKS Porcelánicos Porcelain Tiles

Arena Beige Gris

Rocks Itaca



PORCELÁNICO
PORCELAIN



ESMALTADO
GLAZED



$\leq 1\%$
máx 2 mm.



$E \leq 0,5\%$



$5,8 \times 10^{-6} \times C^{-1}$



>40 N/mm²



Rocks PEI 4
Antideslizante /
Anti slip:
Marrón PEI 3
Mix / Gris PEI 4
Liso / Smooth
Marrón PEI 3
Mix / Gris PEI 4



Rocks
H6



Rocks
6 a 8



clase 5
class 5



Rocks / clase 3
class 3



Antideslizante:
clase 3
Anti slip: class 3
Liso: clase 1
Smooth: class 1



Rocks / C
Antideslizante /
Anti slip: C
Liso / Smooth: B



Rocks / R10
Antideslizante /
Anti slip: R11
Liso / Smooth:
R9



si/yes



✓



✓



✓

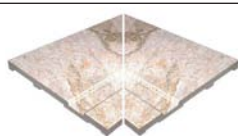


✓



Borde desbordante
Overflowing edge

Cod. 901796 · [PZ340]
Cod. 901794 · [PZ340]
Cod. 901795 · [PZ340]



Esq. int. borde desbordante
Overflowing internal edge

Cod. 901971 · [JG760]
Cod. 901976 · [JG760]
Cod. 901981 · [JG760]



Esq. ext. borde desbordante
Overflowing external edge

Cod. 901972 · [JG760]
Cod. 901977 · [JG760]
Cod. 901982 · [JG760]



Rejilla cerámica monocompact
Monocompact ceramic grid

Cod. 902981 · [PZ595]
Cod. 902980 · [PZ595]
Cod. 902982 · [PZ595]



Esquina rejilla Corner grid

Cod. 901497 · [JG740]
Cod. 901495 · [JG740]
Cod. 901496 · [JG740]



Canaleta* Overflow chanel

Cod. 901811 · [PZ340]
Cod. 901809 · [PZ340]
Cod. 901810 · [PZ340]

* Disponible Canaleta con desagüe
* Available Overflow channel with drainage



ÍTACA Porcelánicos Porcelain Tiles

Gris Marrón Mix



Borde desbordante
Overflowing edge

Cod. 903877 · [PZ340]
Cod. 903887 · [PZ340]
Cod. 903897 · [PZ340]



Esq. int. borde desbordante
Overflowing internal edge

Cod. 903879 · [JG760]
Cod. 903889 · [JG760]
Cod. 903899 · [JG760]



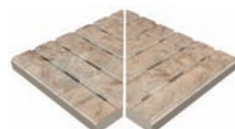
Esq. ext. borde desbordante
Overflowing external edge

Cod. 903878 · [JG760]
Cod. 903888 · [JG760]
Cod. 903898 · [JG760]



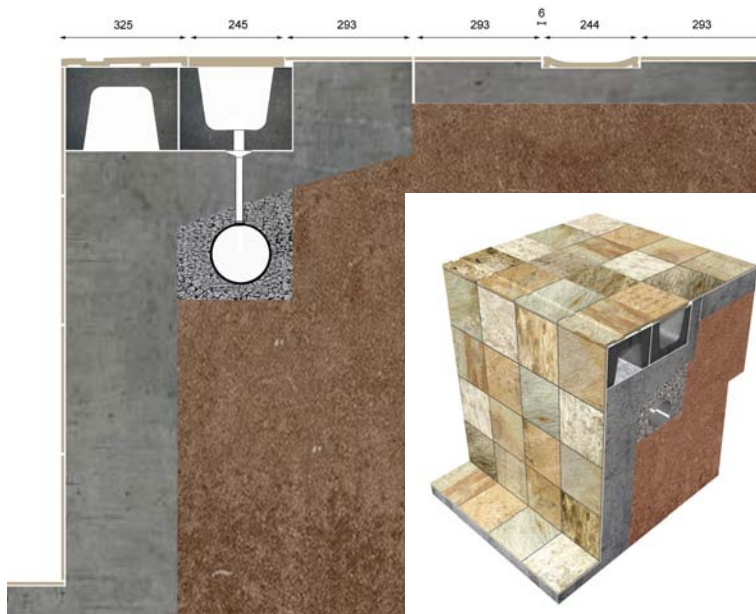
Rejilla cerámica monocompact
Monocompact ceramic grid

Cod. 903880 · [PZ595]
Cod. 903890 · [PZ595]
Cod. 903563 · [PZ595]



Esquina rejilla Corner grid

Cod. 903881 · [JG740]
Cod. 903891 · [JG740]
Cod. 903564 · [JG740]



SISTEMAS DE CORONACIÓN DESBORDANTES OVERFLOW EDGING SYSTEMS

Sistema B-33 B-33 System

NATURAL/COTTO/COLUMBIA

 Natural

 Cotto Blanco






 Cotto Gris

 Columbia Beige

 Columbia Aguamarina



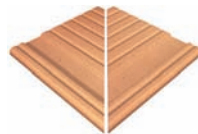
Borde desbordante
Overflowing edge

-  Cod. 902795 · [PZ225]
-  Cod. 902794 · [PZ225]
-  Cod. 901985 · [PZ225]
-  Cod. 901674 · [PZ245]
-  Cod. 901675 · [PZ245]



Esq. int. borde desbordante
Overflowing internal edge

- Cod. 901931 · [JG395]
- Cod. 901936 · [JG395]
- Cod. 901941 · [JG395]
- Cod. 901961 · [JG395]
- Cod. 901956 · [JG395]



Esq. ext. borde desbordante
Overflowing external edge

- Cod. 901932 · [JG395]
- Cod. 901937 · [JG395]
- Cod. 901942 · [JG395]
- Cod. 901962 · [JG395]
- Cod. 901957 · [JG395]



Rejilla cerámica monocompact
Monocompact ceramic grid

- Cod. 902972 · [PZ645]
- Cod. 902973 · [PZ645]
- Cod. 902974 · [PZ645]
- Cod. 902976 · [PZ645]
- Cod. 902977 · [PZ645]








Esquina rejilla Corner grid

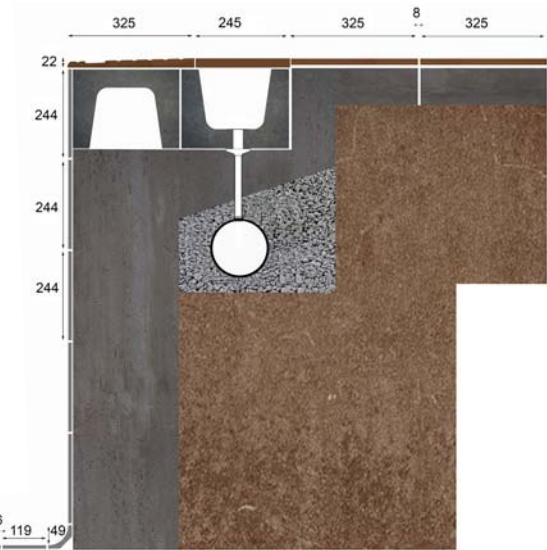
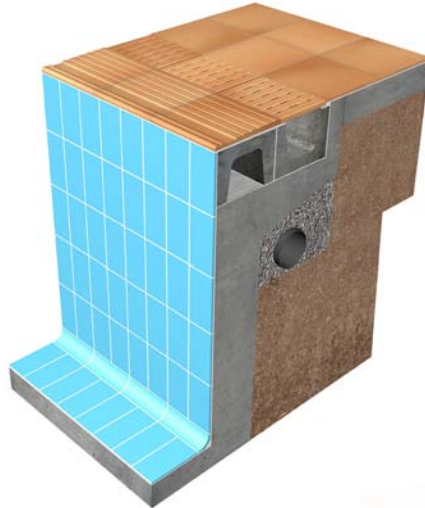
- Cod. 901489 · [JG750]
- Cod. 901490 · [JG750]
- Cod. 901491 · [JG750]
- Cod. 901494 · [JG750]
- Cod. 901493 · [JG750]



Canaleta* Overflow chanel

-  Cod. 901871 · [PZ250]
-  Cod. 901869 · [PZ250]
-  Cod. 901889 · [PZ250]
-  Cod. 901894 · [PZ250]
-  Cod. 901895 · [PZ250]

* Disponible Canaleta con desagüe
* Available Overflow channel with drainage



Piezas de hormigón Concrete pieces



Pieza estándar B-33
B-33 Standard piece
Cod. 902857 · [PZ135]



Pieza maciza esquina de nicho/anclaje corchera B-33
B-33 Niche corner piece/lane rope fixing piece
Cod. 902859 · [PZ255]



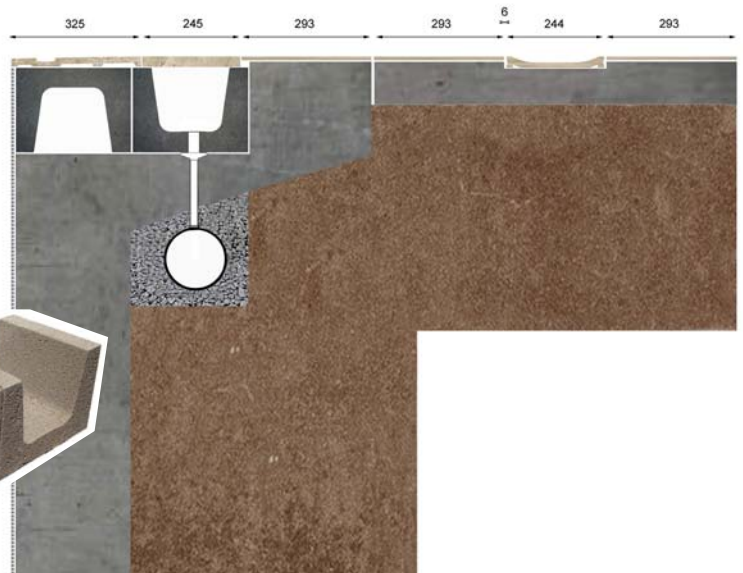
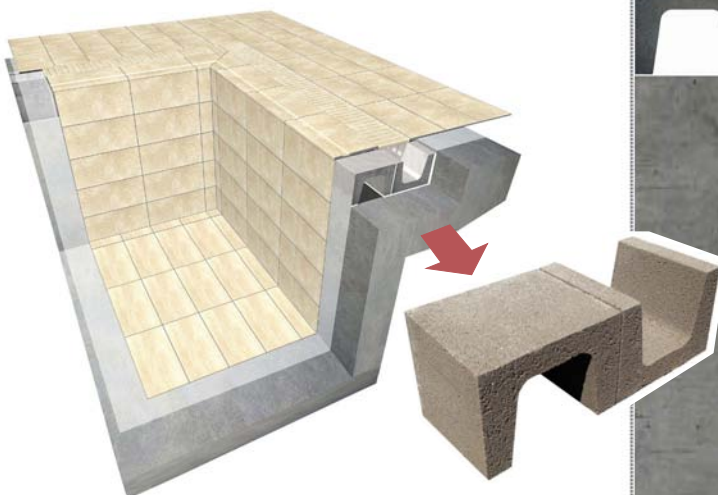
Pieza nicho B-33
B-33 Niche piece
Cod. 902858 · [PZ255]



Pieza esquina interior B-33
B-33 Internal corner piece
Cod. 902860 · [JG745]



Pieza esquina exterior B-33
B-33 External corner piece
Cod. 902861 · [JG745]



SISTEMAS DE CORONACIÓN NO DESBORDANTES NOT OVERFLOW EDGING SYSTEMS

Natural Cotto Columbia



NATURAL
UNGLAZED



ESMALTADO
GLAZED



<1,25% ·
máx 2 mm.

<1,25% ·
máx 2 mm.



3<E≤6%

3<E≤6%



3,8x10⁻⁶xC⁻¹

3,8x10⁻⁶xC⁻¹



20 a 25 N/mm²

20N/mm²



<393mm²



Columbia
PEI 3-4



H4



6



clase/class
Natural 3 a 5
Cotto 4 a 5

clase 5
class 5



clase 3
class 3

clase 2
class 2



C

B



R11

R10



si/yes



✓

✓



✓

✓



✓

✓



✓

✓

SISTEMA NATURAL NATURAL SYSTEM

Natural

Mali

Aneto



Remate 33 Edge 33

Cod. 900197 · [PZ290]
Cod. 901258 · [PZ335]
Cod. 901994 · [PZ335]



Remate 10 Edge 10

Cod. 900194 · [PZ260]



Remate esquina exterior
External corner

Cod. 900204 · [PZ525]
Cod. 901260 · [PZ555]
Cod. 901996 · [PZ560]



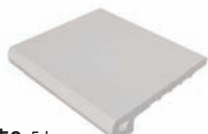
Remate esquina interior
internal corner

Cod. 900184 · [PZ525]
Cod. 901259 · [PZ555]
Cod. 901995 · [PZ560]

COTTO

Cotto Blanco

Cotto Gris



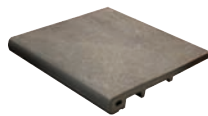
Remate Edge

Cod. 902767 · [PZ335]
Cod. 902811 · [PZ335]

DUERO

Aranda

Urbión



Remate Edge

Cod. 903373 · [JG735]
Cod. 903385 · [PZ365]



Esq. int. remate R50
Internal corner R50

Cod. 903374 · [JG735]
Cod. 903386 · [JG735]



Esq. int. remate R250
Internal corner R250

Cod. 902506 · [JG735]
Cod. 902505 · [JG735]

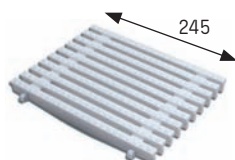


Esq. ext. remate
External corner

Cod. 903375 · [JG735]
Cod. 903387 · [JG735]

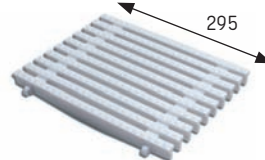
ACCESORIOS ACCESSOIRES

REJILLAS RÍGIDAS RIGID GRATINGS



Rejilla rígida 245 mm Grating 245 mm - rigid

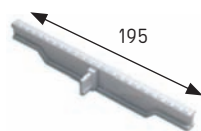
Cod. 903259 · [ML555]



Rejilla rígida 295 mm Grating 295 mm - rigid

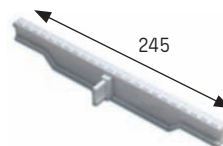
Cod. 903260 · [ML575]
Cod. 903261 · [ML575]

REJILLAS CURVAS BENDABLE GRATINGS



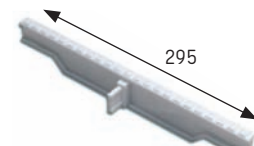
Rejilla curva 195 mm
Grating 195 mm - bendable

Cod. 903262 · [ML630]



Rejilla curva 245 mm
Grating 245 mm - bendable

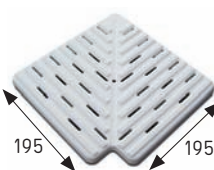
Cod. 903263 · [ML670]



Rejilla curva 295 mm
Grating 295 mm - bendable

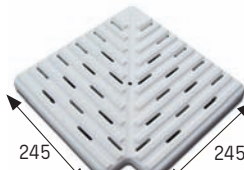
Cod. 903264 · [ML685]

ESQUINAS DE REJILLAS GRATING CORNERS



Esquina 195 mm
Corner 195 mm

Cod. 903265 · [PZ730]



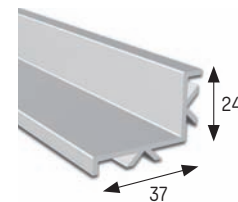
Esquina 245 mm
Corner 245 mm

Cod. 903266 · [PZ740]



Esquina 295 mm
Corner 295 mm

Cod. 903267 · [PZ750]



Angular Angle

Cod. 903268 · [ML345]

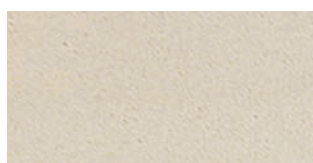


Bases Tiles

Aciker Natural Natural Aciker

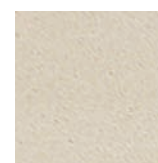
Aciker Rojo Red Aciker

Aciker Gris Grey Aciker



30x60 30x60 9,5 mm.

Cod. 901709 · [MC520]



30x30 30x30 9,5 mm.

Cod. 902334 · [MC485]



25x25 25x25 8,5 mm.

Cod. 900795 · [MC405]

Cod. 903306 · [MC615]

Cod. 903311 · [MC505]



12x25 12x25 8,5 mm.

Cod. 900603 · [MC405]

Cod. 903305 · [MC615]

Cod. 903310 · [MC505]

25x25 25x25 14 mm.

Cod. 901861 · [MC565]

12x25 12x25 14 mm.

Cod. 901863 · [MC565]

Cod. 901864 · [MC675]

Cod. 901865 · [MC645]

Celdillas Cells



25x25 25x25 8,5 mm.

Cod. 900610 · [MC490]

Cod. 903308 · [MC625]

Cod. 903313 · [MC540]



12x25 12x25 8,5 mm.

Cod. 900684 · [MC490]

Cod. 903307 · [MC625]

Cod. 903312 · [MC540]

25x25 25x25 14 mm.

Cod. 901862 · [MC600]

12x25 12x25 14 mm.

Cod. 901866 · [MC600]

Ranurado Grooved

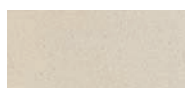


12x25 12x25 8,5 mm.

Cod. 900694 · [MC550]

Cod. 903721 · [MC565]

Aciker Brillo Glossy Aciker



12x25 12x25 8,5 mm.

Cod. 901717 · [MC405]

Aciker 18 mm.



12x25 12x25 18 mm.

Cod. 901867 · [MC690]

Piezas especiales Special pieces



Media caña interior
Internal radial tile

Cod. 900683 · [PZ075]
Cod. 903817 · [PZ085]
Cod. 902632 · [PZ085]



Media caña exterior
External radial tile

Cod. 900699 · [PZ075]
Cod. 903820 · [PZ085]
Cod. 903757 · [PZ085]



Escocia interior

Round internal mitre
Cod. 900690 · [PZ270]
Cod. 903819 · [PZ080]
Cod. 901608 · [PZ080]



Escocia exterior

Round external mitre
Cod. 900691 · [PZ270]
Cod. 903822 · [PZ080]
Cod. 903763 · [PZ080]



Esq. media caña interior
Internal mitre

Cod. 900698 · [PZ320]
Cod. 903818 · [PZ335]
Cod. 901607 · [PZ335]



Esq. media caña exterior
External mitre

Cod. 900697 · [PZ320]
Cod. 903821 · [PZ335]
Cod. 903769 · [PZ335]



Esq. int. canto romo
Bullnose int. corner

Cod. 900693 · [PZ330]
Cod. 903825 · [PZ350]
Cod. 901712 · [PZ350]



Esq. ext. canto romo
Bullnose external corner

Cod. 900696 · [PZ330]
Cod. 903824 · [PZ350]
Cod. 901713 · [PZ350]



Canto romo
Bullnose

Cod. 900687 · [PZ055]
Cod. 903823 · [PZ080]
Cod. 901711 · [PZ080]

Piezas especiales Special pieces



Angulo desigual
Angle different sides

Cod. 901270 · [PZ210]
Cod. 903801 · [PZ235]
Cod. 903802 · [PZ330]



Rodapié radio 33
Skirting board radius 33

Cod. 903254 · [PZ080]
Cod. 901740 · [PZ110]
Cod. 902477 · [PZ110]



Canaleta ranurada 25*
Grooved channel 25

Cod. 901986 · [PZ340]
Cod. 903806 · [PZ355]
Cod. 903807 · [PZ355]

* Disponible Canaleta con desagüe
* Available Overflow channel with drainage



Canaleta
Overflow channel

Cod. 900659 · [PZ125]
Cod. 903339 · [PZ200]
Cod. 903340 · [PZ180]



Final de canaleta
End channel piece

Cod. 903640 · [PZ375]
Cod. 903637 · [PZ455]
Cod. 903636 · [PZ420]



Canaleta con desagüe
Drainage overflow channel

Cod. 900660 · [PZ150]
Cod. 903343 · [PZ215]
Cod. 903344 · [PZ195]



Rinconera Angle

Cod. 903255 · [PZ075]
Cod. 903808 · [PZ085]
Cod. 903632 · [PZ085]



Esquina interior rinconera rodapié
Skirting board angle

Cod. 903257 · [PZ350]
Cod. 903810 · [PZ355]
Cod. 902479 · [PZ355]



Esquina exterior cantonera rodapié
Skirting board edging

Cod. 903258 · [PZ350]
Cod. 903814 · [PZ355]
Cod. 902478 · [PZ355]



Cantonera Edging

Cod. 903256 · [PZ075]
Cod. 903812 · [PZ085]
Cod. 903631 · [PZ085]

Baldosas extruidas absorción de agua 3%<E<=6%. Características técnicas para series Natural, Cotto, Columbia.
Extruded tiles, water absorbtion 3%<E<=6%. Technical features for Natural, Cotto, Columbia.

GRUPO GROUP Alla, Alla₂

Descripción símbolo Symbol description	Norma de ensayo Standard test	Valor requerido EN 14411:2016 - Anexo B y C Required values	Valor Gres Aragón Gres de Aragon values
Características dimensionales Dimension tolerance	ISO 10545-2:98	<1,25% máx. 2 mm	Cumple la norma Meets the norm
Absorción de agua Water absorbtion	ISO 10545-3:97	Grupo Alla: 3% < E <= 6% Group Alla	3% < E <= 6%
Resistencia a la flexión Breaking Strength	ISO 10545-4:2012	> 20 N/mm ² Grupo Alla1 > 13 N/mm ² Grupo Alla2	De 18 a 25 N/mm ²
Resistencia al impacto Impact resistance	ISO 10545-5:98	No exigido/Método disponible Not required /Available method	0,68-0,71
Resistencia a la abrasión profunda Resistance to deep abrasion	ISO 10545-6:2012	< 393 mm ³	<393 mm ³
Resistencia a la abrasión superficial Resistance to surface abrasion	ISO 10545-7:99	De 0 a 5 From 0 to 5	De 2 a 4 From 2 to 4
Coef. Dilatación termica lineal Linear thermal expansion coefficient	ISO 10545-8:2014	No exigido/Método disponible Not required /Available method	3,8 x 10 ⁻⁶ °C ⁻¹
Resistencia al choque térmico Resistance to thermal shock	ISO 10545-9:2013	Exigido Required	Resiste Resists
Expansión por humedad Moisture expansion	ISO 10545-10:97	No exigido/Método disponible Not required /Available method	0,1 mm/m
Resistencia al cuarteo Crazing resistance	ISO 10545-11:97	Exigido Required	Resiste Resists
Resistencia a la helada Frost resistance	ISO 10545-12:97	Exigido Required	Resiste Resists
Resistencia química Chemical resistance	ISO 10545-13:98	Mínimo UB-GB Minimun UB-GB	UHA-GHA
Resistencia a las manchas Resistance to stains	ISO 10545-14:98	Mínimo clase 3 Minimun class 3	Clase 3 a 5 Class 3 to 5
Resistencia al rayado (método Mohs) Scratch hardness of surface (Mohs Method)	UNE 67101:85 +1M:92	De 1 a 10 From 1 to 10	De 5 a 9 From 5 to 9
Desgaste transito peatonal Erosion to pedestrian transit	UNE 138001:2008	No Exigido Not Required	H5 - H6

Baldosas extruidas absorción de agua E<=0,5%. Características técnicas para series Porcelánicas (Duero, Rocks, Forest e Itaca) y Línea Técnica
Extruded tiles, water absorbtion E<=0,5%. Technical features for Porcelain series (Duero, Rocks, Forest and Itaca) and Technical Range

GRUPO GROUP Ala

Descripción símbolo Symbol description	Norma de ensayo Standard test	Valor requerido EN 14411:2016 - Anexo M Required values	Valor Gres Aragón Gres de Aragon values
Características dimensionales Dimension tolerance	ISO 10545-2:98	<1% máx. 2 mm	Cumple la norma Meets the norm
Absorción de agua Water absorbtion	ISO 10545-3:97	Grupo Ala: E <= 0,5% Group Ala	E <= 0,5%
Resistencia a la flexión Breaking Strength	ISO 10545-4:2012	> 28 N/mm ²	> 28 N/mm ²
Resistencia al impacto Impact resistance	ISO 10545-5:98	No exigido/Método disponible Not required /Available method	0,84
Resistencia a la abrasión profunda Resistance to deep abrasion	ISO 10545-6:2012		
Resistencia a la abrasión superficial Resistance to surface abrasion	ISO 10545-7:99	De 0 a 5 From 0 to 5	De 2 a 5 From 2 to 5
Coef. Dilatación termica lineal Linear thermal expansion coefficient	ISO 10545-8:2014	No exigido/Método disponible Not required /Available method	5,8 x 10 ⁻⁶ °C ⁻¹
Resistencia al choque térmico Resistance to thermal shock	ISO 10545-9:2013	Exigido Required	Resiste Resists
Expansión por humedad Moisture expansion	ISO 10545-10:97	No exigido/Método disponible Not required /Available method	0,1 mm/m
Resistencia al cuarteo Crazing resistance	ISO 10545-11:97	Exigido Required	Resiste Resists
Resistencia a la helada Frost resistance	ISO 10545-12:97	Exigido Required	Resiste Resists
Resistencia química Chemical resistance	ISO 10545-13:98	Mínimo UB-GB Minimun UB-GB	GHA
Resistencia a las manchas Resistance to stains	ISO 10545-14:98	Mínimo clase 3 Minimun class 3	Clase 5 Class 5
Resistencia al rayado (método Mohs) Scratch hardness of surface (Mohs Method)	UNE 67101:85 +1M:92	De 1 a 10 From 1 to 10	De 4 a 8 From 4 to 8
Desgaste transito peatonal Erosion to pedestrian transit	UNE 138001:2008	No Exigido Not Required	H5 - H6
Coeficiente fricción dinámica (DCOF) Dynamic coefficient of friction	ASTM A137.1:2012 Apdo. 9,6	>0,42	0,80
Antibacteriano Antibacterian	JIS Z-2801:2010 (ISO 22196)	No Exigido Not Required	R>2 Reducción antibacteriana >99%

Características de resistencia al deslizamiento, todas las series / Slip resistance features, all series

Resistencia al deslizamiento Slip resistance	Norma de ensayo Standard test	Valor requerido Required values	Valor Gres Aragón Gres de Aragon values
A pie calzado Slip resistance with footwear	DIN 51130:2010	No exigido/Método disponible Not required /Available method	R10 - R11 - R12 - R13
A pie descalzo Barefoot slip resistance	DIN 51097:92	No exigido/Método disponible Not required /Available method	A - B - C
Péndulo (CTE) Not required out of Spain	UNE-ENV 12633:03	1-2-3 En función de su localización Exigencia básica de seguridad SU1 del Código Técnico de edificación	1-2-3

GRES ARAGON

SOLUTIONS FOR LIVING

Компания Славдом

www.slav-dom.ru

Контактные данные в г. Москва

Профессиональный шоу-рум «Павелецкая»:

115114, Москва, Павелецкая наб., д. 2, с. 01, оф. 133, деловой квартал «LoftVille»

Демо-парк, шоу-рум, офис продаж «Можайское-МКАД54»:

121596, Москва, Можайское ш., д. 165, с. 1 (54 км. МКАД, внешняя сторона, заезд через дублер)

8 (495) 640-51-51

8 (800) 333-51-51

msk@slav-dom.ru

Контактные данные в г. Санкт-Петербург

Профессиональный шоу-рум «Аптекарская»:

197022, Санкт-Петербург, Аптекарская наб., д. 12, БЦ «Кантемировский»

Демо-парк, шоу-рум, офис продаж «Пискаревский»:

195273, Санкт-Петербург, Пискаревский пр., д. 150, корп. 2, лит. Н

8 (812) 337-51-51

8 (800) 333-51-51

spb@slav-dom.ru

EDICIÓN / EDITION: 0417