

JASPER

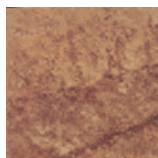
33x33 cm.

Naturales Natural Tiles

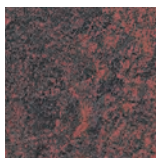
PAVIMENTOS FLOOR TILES

104





Marrón



Rojo

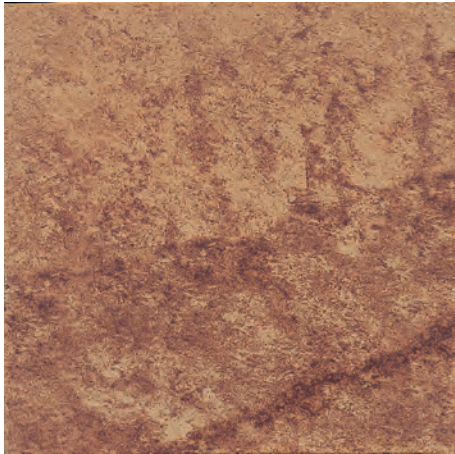


	NATURAL UNGLAZED	
	Características dimensionales Dimension tolerance	<1,25% - máx 2 mm.
	Absorción de agua Water absorption	3<E≠6%
	Coef. Dilatación térmica lineal Linear thermal expansion coefficient	3,8x10 ⁻⁶ xC ⁻¹
	Resistencia a la flexión Breaking Strength	20 N/mm ²
	Resistencia a la abrasión profunda Resistance to deep abrasion	<393 mm ³
	Resistencia a las manchas Resistance to stains	clase 3 a 5 class 3 a 5
	Péndulo (CTE) Not required out of Spain	clase 3 class 3
	A pie descalzo Barefoot slip resistance	C
	A pie calzado Slip resistance with footwear	R11
	Extrusión Extruded tiles	✓
	Resistencia a la helada Frost resistance	✓
	Resistencia al choque térmico Resistance to thermal shock	✓
	Resistencia química Chemical resistance	✓

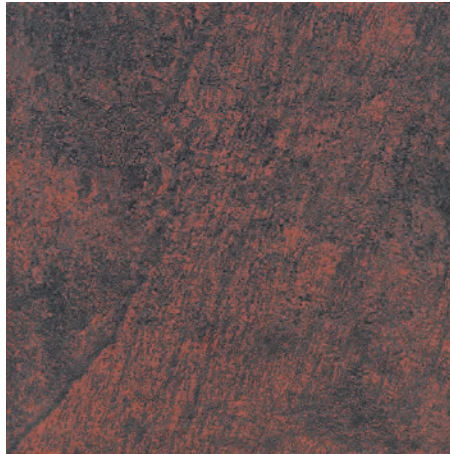
JASPER

33x33 cm.

Colores / Colors



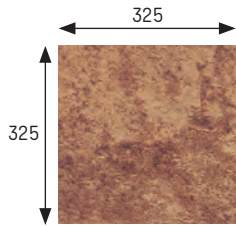
Marrón



Rojo

Base 33x33 Tile 33x33

Marrón Cod. 901634 · [MC510]
Rojo Cod. 901635 · [MC510]



[325x325x16 mm.] '16

	Espesor (mm) Thickness (mm)	U.M.*	U.M./caja U.M./box	U.M./Palet U.M./Pallet	Pzs./U.M. Pcs./U.M.	Pzs./caja Pcs/box	Kg./U.M. Kg./U.M.	Kg./caja Kg./box	Kg./Palet Kg./Pallet
Base 33x33 Tile 33x33	16	m ² sqm	0,666	42,624	9	6	32,6	21,75	1391

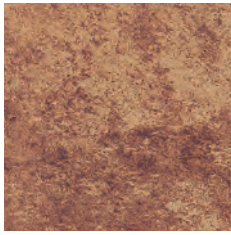
*Unidad de Medida. Los artículos medidos en M² o ML se sirven contando la junta normal entre piezas
 *Unit of measure. Items measured in SQM or LM are delivered assuming average joint between pieces



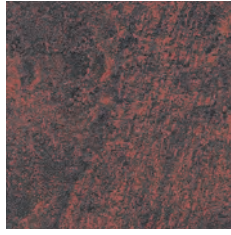
JASPER

Piezas especiales Special pieces

Colores / Colors



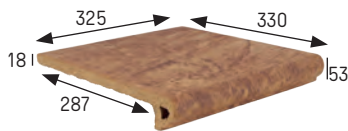
Marrón



Rojo

Peldaño 24-33 Stair-tread 24-33

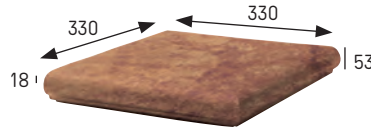
Marrón Cod. 901637 · [PZ275]
Rojo Cod. 901638 · [PZ275]



[325x330x18 mm.]

Esquina ref.24 Stair-tread corner ref.24

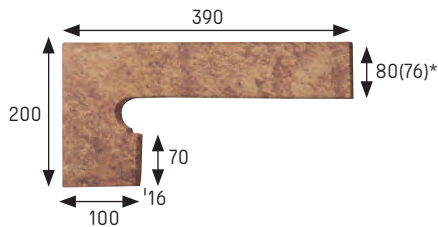
Marrón Cod. 901640 · [MC555]
Rojo Cod. 901641 · [MC555]



[330x330x18 mm.]

Zanquín izda. String left side

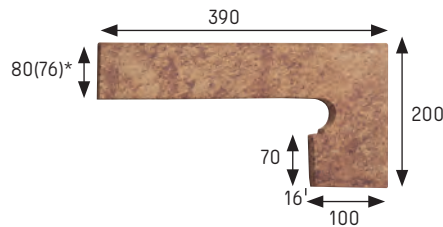
Marrón Cod. 901643 · [PZ160]
Rojo Cod. 901644 · [PZ160]



[390x80(76)/200x100 x16 mm.]

Zanquín dcha. String right side

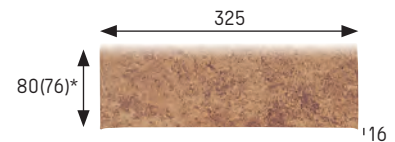
Marrón Cod. 901646 · [PZ160]
Rojo Cod. 901647 · [PZ160]



[390x80(76)/200x100 x16 mm.]

Rodapié 33 Skirting board 33

Marrón Cod. 901649 · [ML160]
Rojo Cod. 901650 · [ML160]



[325x80(76)x16 mm.]

Anchura recomendada de la junta de colocación: 6 - 8 mm
A 6 - 8 mm wide installation joint is recommended.

(*) Entre paréntesis las medidas especiales del color Rojo
(* In brackets special sizes for Rojo colour

Marrón 33x33

	Espesor (mm) Thickness (mm)	U.M.*	U.M./caja U.M./box	U.M./Palet U.M./Pallet	Pzs./U.M. Pcs./U.M.	Pzs./caja Pcs/box	Kg./U.M. Kg./U.M.	Kg./caja Kg./box	Kg./Palet Kg./Pallet
Peldaño 24-33 Stair-tread 24-33	18	Pz. Pc.	6	216	1	6	4,2	26,4	950
Esquina ref. 24 Stair-tread corner ref.24	18	Pz. Pc.	2	60	1	2	6	12	360
Zanquín izda. String left	16	Pz. Pc.	10	300	1	10	1,3	13	390
Zanquín dcha. String right	16	Pz. Pc.	10	300	1	10	1,3	13	390
Rodapié Skirting board	16	ml lm	8	576	3	24	2,3	18,4	1325

*Unidad de Medida. Los artículos medidos en M² o ML se sirven contando la junta normal entre piezas
 *Unit of measure. Items measured in SQM or LM are delivered assuming average joint between pieces

Компания Славдом

www.slav-dom.ru

Контактные данные в г. Москва

Профессиональный шоу-рум «Павелецкая»:

115114, Москва, Павелецкая наб., д. 2, с. 01, оф. 133,
деловой квартал «LoftVille»

**Демо-парк, шоу-рум, офис продаж «Можайское-
МКАД54»:**

121596, Москва, Можайское ш., д. 165, с. 1 (54 км.
МКАД, внешняя сторона, заезд через дублер)

8 (495) 640-51-51

8 (800) 333-51-51

msk@slav-dom.ru

Контактные данные в г. Санкт-Петербург

Профессиональный шоу-рум «Аптекарская»:

197022, Санкт-Петербург, Аптекарская наб., д. 12,
БЦ «Кантемировский»

Демо-парк, шоу-рум, офис продаж «Пискаревский»:

195273, Санкт-Петербург, Пискаревский пр., д. 150,
корп. 2, лит. Н

8 (812) 337-51-51

8 (800) 333-51-51

spb@slav-dom.ru